



BowlingGP Youth 1serie

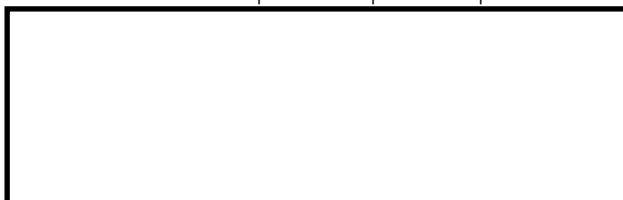


Oil Pattern Distance	44	Reverse Brush Drop	44	Oil Per Board	Multi ul
Forward Oil Total	13.985 mL	Reverse Oil Total	15.28 mL	Volume Oil Total	29.265 mL
Tank Configuration	A Only	Tank A Conditioner	KEGEL	Tank B Conditioner	KEGEL

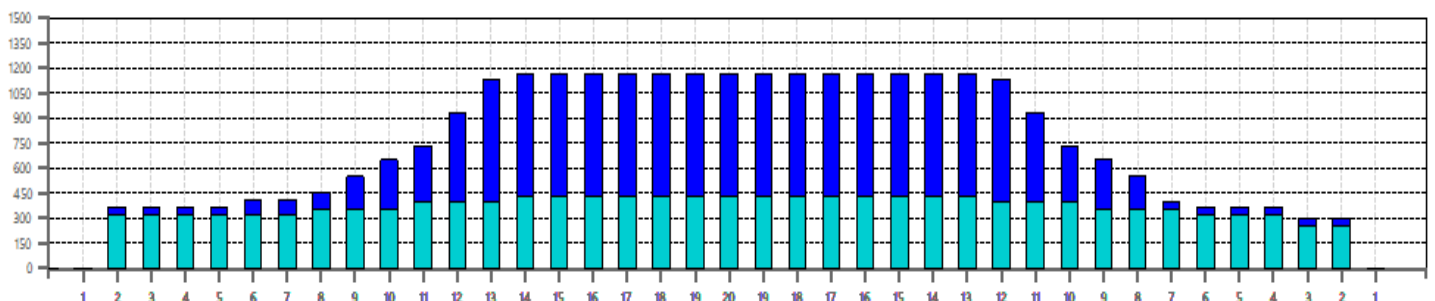
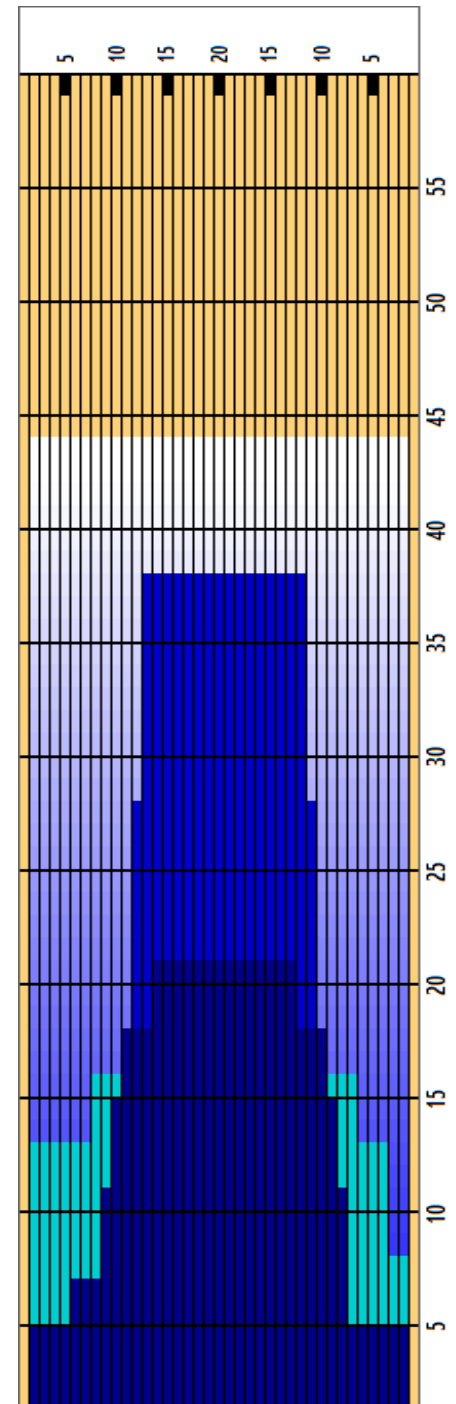
	START	STOP	LOADS	MICS	SPEED	TANK	CROSSED	START	END	FEET	T.OIL
1	2L	2R	3	45	10	A	111	0.0	2.8	2.8	4995
2	2L	2R	3	40	14	A	111	2.8	8.7	5.9	4440
3	2L	4R	2	35	18	A	70	8.7	13.8	5.1	2450
4	8L	7R	1	35	18	A	26	13.8	16.3	2.5	910
5	11L	10R	1	35	18	A	20	16.3	18.8	2.5	700
6	14L	13R	1	35	18	A	14	18.8	21.3	2.5	490
7	2L	2R	0	50	18	A	0	21.3	30.0	8.7	0
8	2L	2R	0	50	22	A	0	30.0	37.0	7.0	0
9	2L	2R	0	50	22	A	0	37.0	44.0	7.0	0

	START	STOP	LOADS	MICS	SPEED	TANK	CROSSED	START	END	FEET	T.OIL
1	2L	2R	0	50	26	A	0	44.0	38.0	-6.0	0
2	13L	12R	4	50	18	A	64	38.0	27.8	-10.2	3200
3	12L	11R	4	50	18	A	72	27.8	17.6	-10.2	3600
4	11L	10R	1	50	18	A	20	17.6	15.1	-2.5	1000
5	10L	9R	2	50	14	A	44	15.1	11.2	-3.9	2200
6	9L	8R	2	50	14	A	48	11.2	7.3	-3.9	2400
7	6L	8R	1	45	14	A	27	7.3	5.4	-1.9	1215
8	2L	2R	1	45	10	A	37	5.4	4.0	-1.4	1665
9	2L	2R	0	55	14	A	0	4.0	0.0	-4.0	0

Cleaner Ratio Main Mix NA Forward
Cleaner Ratio Back End Mix NA Reverse
Cleaner Ratio Back End Distance NA Combined
Buffer RPM: 4 = 700 | 3 = 500 | 2 = 200 | 1 = 100



Item	3L-7L:18L-18R	8L-12L:18L-18R	13L-17L:18L-18R	18L-18R:17R-13R	18L-18R:12R-8R	18L-18R:7R-3R
Description	Outside:Middle	Middle:Middle	Inside:Middle	Middle: Inside	Middle:Middle	Middle:Outside
Track Zone Ratio	3.02	1.76	1.01	1	1.46	3.22





BowlingGP Youth 2serie

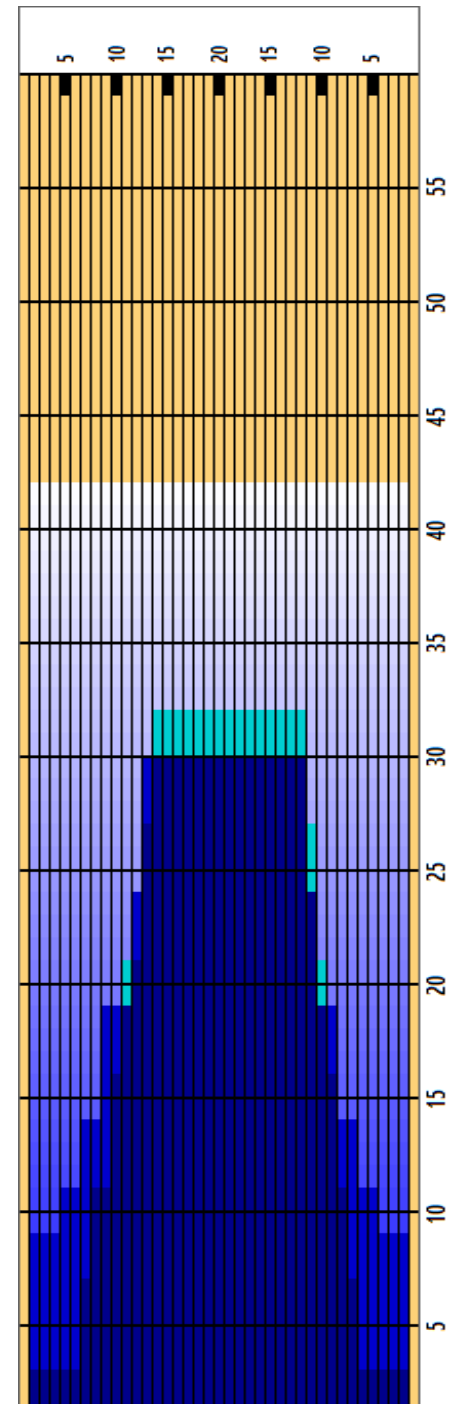


Oil Pattern Distance	42	Reverse Brush Drop	36	Oil Per Board	50 uL
Forward Oil Total	18.15 mL	Reverse Oil Total	10.45 mL	Volume Oil Total	28.6 mL
Tank Configuration	A Only	Tank A Conditioner		Tank B Conditioner	

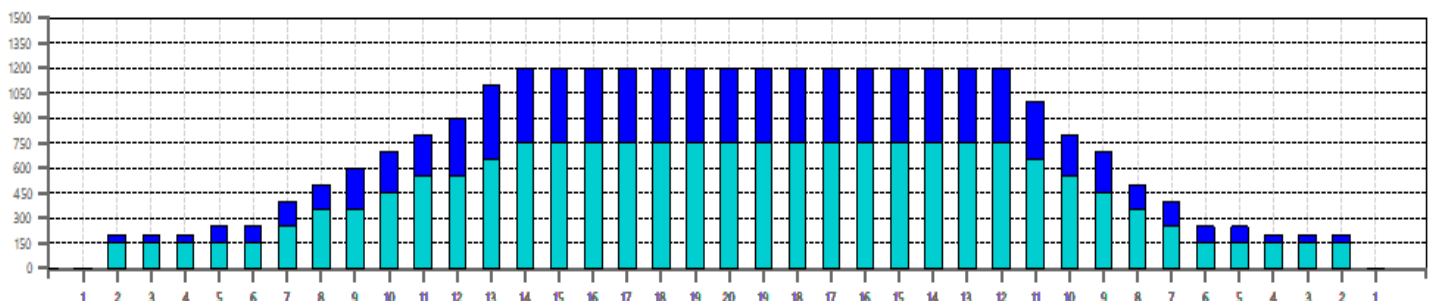
	START	STOP	LOADS	SPEED	TANK	CROSSED	START	END	FEET	T.OIL
1	2L	2R	3	14	A	111	0.0	3.9	3.9	5550
2	7L	7R	2	14	A	54	3.9	7.8	3.9	2700
3	8L	8R	2	14	A	50	7.8	11.7	3.9	2500
4	10L	9R	2	18	A	44	11.7	16.8	5.1	2200
5	11L	10R	2	18	A	40	16.8	21.9	5.1	2000
6	13L	11R	2	18	A	34	21.9	27.0	5.1	1700
7	14L	12R	2	18	A	30	27.0	32.1	5.1	1500
8	2L	2R	0	22	A	0	32.1	42.0	9.9	0

	START	STOP	LOADS	SPEED	TANK	CROSSED	START	END	FEET	T.OIL
1	2L	2R	0	30	A	0	42.0	30.0	-12.0	0
2	13L	12R	2	22	A	32	30.0	23.8	-6.2	1600
3	12L	11R	2	18	A	36	23.8	18.7	-5.1	1800
4	9L	9R	2	18	A	46	18.7	13.6	-5.1	2300
5	7L	7R	1	18	A	27	13.6	11.1	-2.5	1350
6	5L	5R	1	14	A	31	11.1	9.2	-1.9	1550
7	2L	2R	1	14	A	37	9.2	7.3	-1.9	1850
8	2L	2R	0	14	A	0	7.3	0.0	-7.3	0

Cleaner Ratio Main Mix NA Forward
Cleaner Ratio Back End Mix NA Reverse
Cleaner Ratio Back End Distance NA Combined
Buffer RPM: 4 = 700 | 3 = 500 | 2 = 200 | 1 = 100



Item	3L-7L:18L-18R	8L-12L:18L-18R	13L-17L:18L-18R	18L-18R:17R-13R	18L-18R:12R-8R	18L-18R:7R-3R
Description	Outside:Middle	Middle:Middle	Inside:Middle	Middle: Inside	Middle:Middle	Middle:Outside
Track Zone Ratio	4.62	1.71	1.02	1	1.43	4.62





BowlingGP Youth 3serie



Oil Pattern Distance	40	Reverse Brush Drop	38	Oil Per Board	Multi ul
Forward Oil Total	13.98 mL	Reverse Oil Total	11.565 mL	Volume Oil Total	25.545 mL
Tank Configuration	Multi Tank	Tank A Conditioner	Terrain	Tank B Conditioner	Fire

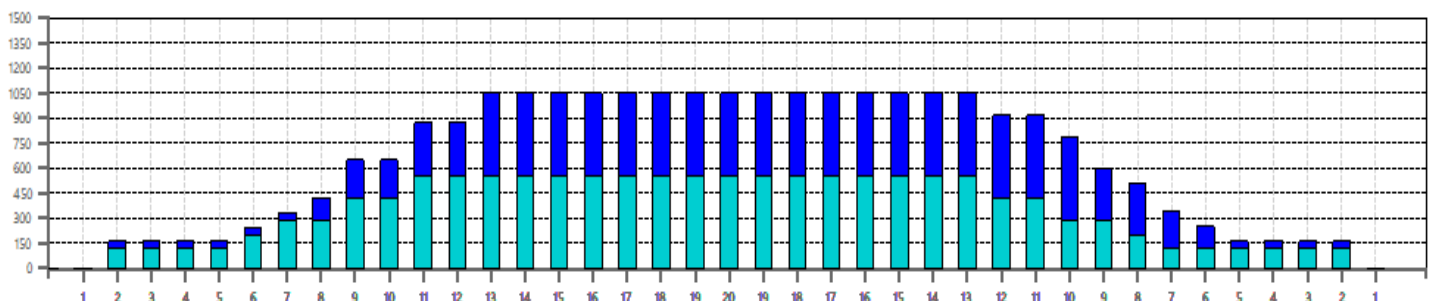
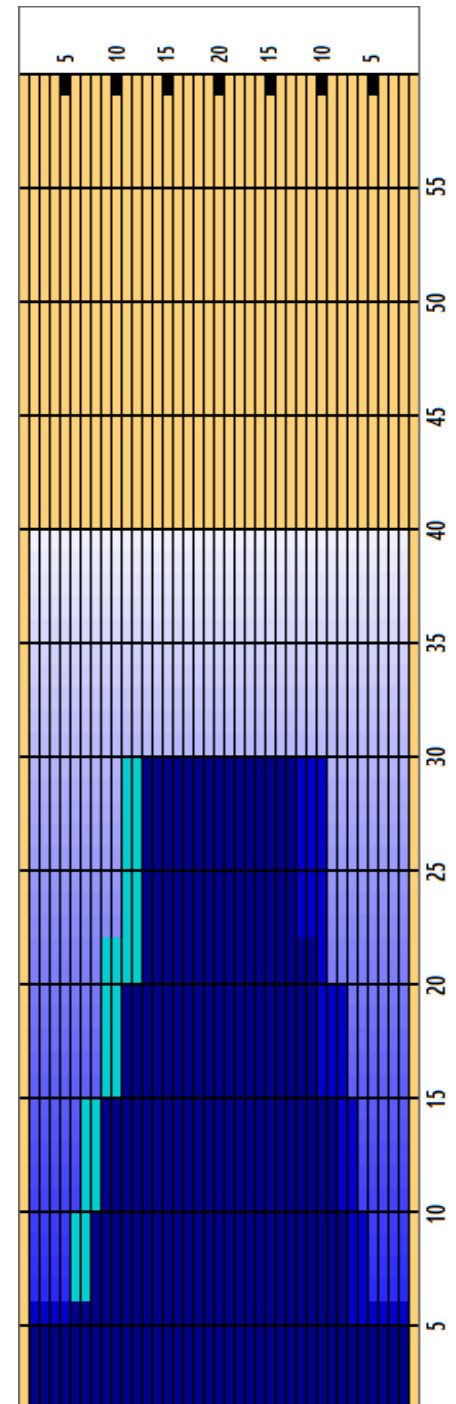
	START	STOP	LOADS	MICS	SPEED	TANK	CROSSED	START	END	FEET	T.OIL
1	2L	2R	3	40	18	A	111	0.0	5.1	5.1	4440
2	6L	8R	2	40	18	B	54	5.1	10.2	5.1	2160
3	7L	9R	2	45	18	B	50	10.2	15.3	5.1	2250
4	9L	11R	3	45	18	B	63	15.3	22.9	7.6	2835
5	11L	13R	3	45	18	B	51	22.9	30.5	7.6	2295
6	2L	2R	0	45	18	B	0	30.5	34.0	3.5	0
7	2L	2R	0	45	22	B	0	34.0	40.0	6.0	0

	START	STOP	LOADS	MICS	SPEED	TANK	CROSSED	START	END	FEET	T.OIL
1	2L	2R	0	45	26	A	0	40.0	38.0	-2.0	0
2	2L	2R	0	45	18	A	0	38.0	30.0	-8.0	0
3	13L	10R	4	45	18	A	72	30.0	19.8	-10.2	3240
4	11L	8R	2	45	18	A	44	19.8	14.7	-5.1	1980
5	9L	7R	2	45	18	A	50	14.7	9.6	-5.1	2250
6	8L	6R	2	45	14	A	54	9.6	5.7	-3.9	2430
7	2L	2R	1	45	14	A	37	5.7	3.8	-1.9	1665
8	2L	2R	0	45	14	A	0	3.8	0.0	-3.8	0

Cleaner Ratio Main Mix NA Forward
Cleaner Ratio Back End Mix NA Reverse
Cleaner Ratio Back End Distance NA Combined
Buffer RPM: 4 = 700 | 3 = 500 | 2 = 200 | 1 = 100

By using two of Kegel's highest viscosity conditioners, Terrain and Fire, along with utilizing the FLEX's high speed buffer in front part of the lane, the Mercury pattern can balance out worn lane surfaces in the head area. However, with the asymmetric shift being used on the Mercury pattern, depending on topography and what side of the lane you play

Item	3L-7L:18L-18R	8L-12L:18L-18R	13L-17L:18L-18R	18L-18R:17R-13R	18L-18R:12R-8R	18L-18R:7R-3R
Description	Outside:Middle	Middle:Middle	Inside:Middle	Middle: Inside	Middle:Middle	Middle:Outside
Track Zone Ratio	4.91	1.52	1	1	1.41	4.82



Oil Pattern Distance	38	Reverse Brush Drop	38	Oil Per Board	50 uL
Forward Oil Total	11.9 mL	Reverse Oil Total	10.95 mL	Volume Oil Total	22.85 mL
Tank Configuration	A Only	Tank A Conditioner	PRODIGY	Tank B Conditioner	ICE

	START	STOP	LOADS	SPEED	TANK	CROSSED	START	END	FEET	T.OIL
1	2L	2R	2	14	A	74	0.0	1.9	1.9	3700
2	6L	6R	1	14	A	29	1.9	3.8	1.9	1450
3	8L	8R	1	14	A	25	3.8	5.7	1.9	1250
4	10L	10R	3	14	A	63	5.7	11.6	5.9	3150
5	12L	12R	2	18	A	34	11.6	16.7	5.1	1700
6	14L	14R	1	18	A	13	16.7	19.2	2.5	650
7	2L	2R	0	18	A	0	19.2	26.0	6.8	0
8	2L	2R	0	22	A	0	26.0	38.0	12.0	0

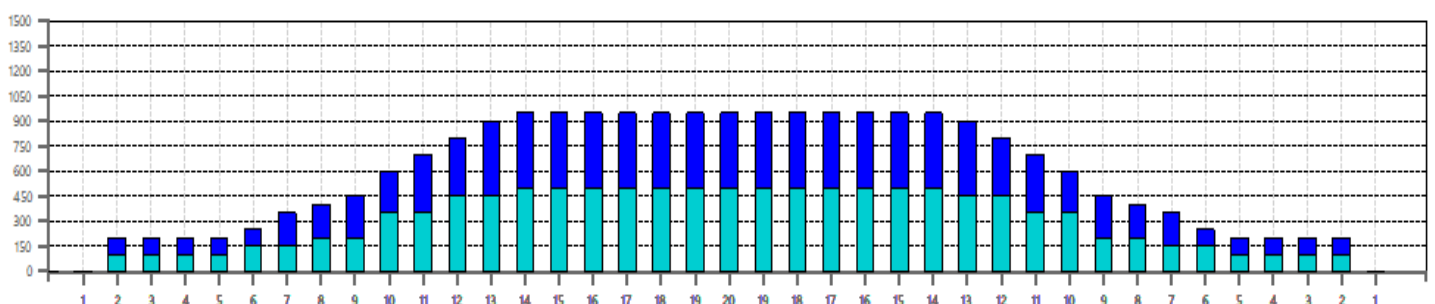
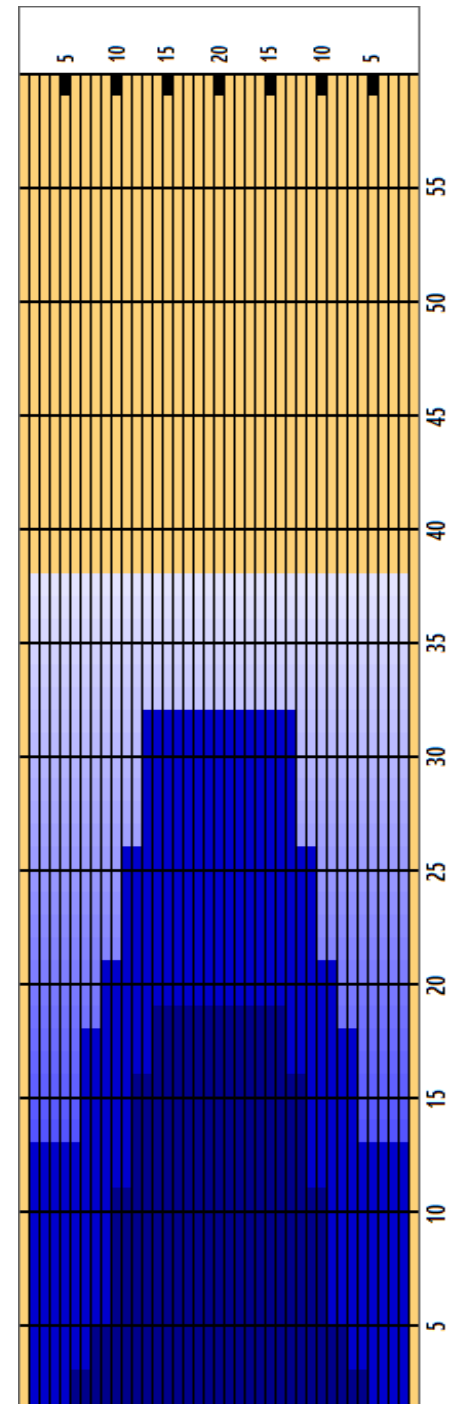
	START	STOP	LOADS	SPEED	TANK	CROSSED	START	END	FEET	T.OIL
1	2L	2R	0	30	A	0	38.0	32.0	-6.0	0
2	13L	13R	2	22	A	30	32.0	25.8	-6.2	1500
3	11L	11R	2	18	A	38	25.8	20.7	-5.1	1900
4	9L	9R	1	18	A	23	20.7	18.2	-2.5	1150
5	7L	7R	2	18	A	54	18.2	13.1	-5.1	2700
6	2L	2R	2	18	A	74	13.1	8.0	-5.1	3700
7	2L	2R	0	14	A	0	8.0	0.0	-8.0	0

Cleaner Ratio Main Mix NA Forward
 Cleaner Ratio Back End Mix NA Reverse
 Cleaner Ratio Back End Distance NA Combined
 Buffer RPM: 4 = 700 | 3 = 500 | 2 = 200 | 1 = 100



MIDDLE ROAD - 4239 In political terms, this pattern is centrism in nature because the characteristics lie between the extremes of having to play too far to the right or too far to the left. The MIDDLE ROAD is a 39 foot pattern that is moderately challenging; it's not too easy nor is it not too tough. The best mindset and line for this pattern is usually somewhere near

Item	3L-7L:18L-18R	8L-12L:18L-18R	13L-17L:18L-18R	18L-18R:17R-13R	18L-18R:12R-8R	18L-18R:7R-3R
Description	Outside:Middle	Middle:Middle	Inside:Middle	Middle: Inside	Middle:Middle	Middle:Outside
Track Zone Ratio	3.96	1.61	1.01	1.01	1.61	3.96





BowlingGP Youth 5serie



Oil Pattern Distance	42	Reverse Brush Drop	38	Oil Per Board	Multi ul
Forward Oil Total	14.585 mL	Reverse Oil Total	11.4 mL	Volume Oil Total	25.985 mL
Tank Configuration	B Only	Tank A Conditioner	FIRE	Tank B Conditioner	ICE

	START	STOP	LOADS	MICS	SPEED	TANK	CROSSED	START	END	FEET	T.OIL
1	2L	2R	4	45	18	B	148	0.0	7.6	7.6	6660
2	10L	10R	5	45	18	B	105	7.6	20.3	12.7	4725
3	11L	11R	1	50	18	B	19	20.3	22.8	2.5	950
4	12L	12R	1	50	18	B	17	22.8	25.3	2.5	850
5	13L	13R	1	50	18	B	15	25.3	27.8	2.5	750
6	14L	14R	1	50	18	B	13	27.8	30.3	2.5	650
7	2L	2R	0	50	22	B	0	30.3	37.0	6.7	0
8	2L	2R	0	50	26	B	0	37.0	42.0	5.0	0

	START	STOP	LOADS	MICS	SPEED	TANK	CROSSED	START	END	FEET	T.OIL
1	2L	2R	0	50	30	B	0	42.0	38.0	-4.0	0
2	13L	13R	2	50	18	B	30	38.0	32.9	-5.1	1500
3	12L	12R	2	50	18	B	34	32.9	27.8	-5.1	1700
4	11L	11R	2	45	18	B	38	27.8	22.7	-5.1	1710
5	10L	10R	2	45	18	B	42	22.7	17.6	-5.1	1890
6	9L	9R	5	40	14	B	115	17.6	7.7	-9.9	4600
7	2L	2R	0	40	14	B	0	7.7	0.0	-7.7	0

Cleaner Ratio Main Mix NA Forward
Cleaner Ratio Back End Mix NA Reverse
Cleaner Ratio Back End Distance NA Combined
Buffer RPM: 4 = 700 | 3 = 500 | 2 = 200 | 1 = 100

Designed for FLEX | GATEWAY ARCH - 8442 | John Davis, the Founder of Kegel, was from Missouri and used to have a saying: "they always like 'em easy in St. Louis." The Gateway Arch pattern is a tribute to that saying and yes, the composite shape is one large arch from 9R-9L!

Item	3L-7L:18L-18R	8L-12L:18L-18R	13L-17L:18L-18R	18L-18R:17R-13R	18L-18R:12R-8R	18L-18R:7R-3R
Description	Outside:Middle	Middle:Middle	Inside:Middle	Middle: Inside	Middle:Middle	Middle:Outside
Track Zone Ratio	6.58	1.93	1.01	1.01	1.93	6.58

